

### Standard Aquatic Vegetation Summary Sheet

Code No	Plant Name	Total number of AVAS's for each Density Category				Calculations				Sum of Columns 5-8	Total No. of AVAS	Col 9 divided by Col 10
		A	B	C	D	A x 1	B x 10	C x 40	D x 80	9	10	11
1	Eurasian watermilfoil	4	5	0	1	4	50	0	80	134	62	2.16
2	Curly leaf pondweed	0	0	0	0	0	0	0	0			
3	Chara	2	9	17	25	2	90	680	2000	2772	62	44.71
4	Thinleaf pondweed	3	0	0	0	3	0	0	0	3	62	0.05
5	Flatstem pondweed	0	4	1	0	0	40	40	0	80	62	1.29
6	Robbins pondweed	0	0	0	0	0	0	0	0			
7	Variable pondweed	13	18	4	2	13	180	160	160	513	62	8.27
8	White stem pondweed	0	0	0	0	0	0	0	0			
9	Richardsons pondweed	0	0	0	0	0	0	0	0			
10	Illinois pondweed	0	3	2	0	0	30	80	0	110	62	1.77
11	Large leaf pondweed	7	10	2	2	7	100	80	160	347	62	5.60
12	American pondweed	0	0	0	0	0	0	0	0			
13	Floating leaf pondweed	0	0	0	0	0	0	0	0			
14	Water stargrass	0	1	0	0	0	10	0	0	10	62	0.16
15	Wild celery	5	14	8	7	5	140	320	560	1025	62	16.53
16	Sagittaria (submersed)	1	3	0	0	1	30	0	0	31	62	0.50
17	Northern watermilfoil	0	0	0	0	0	0	0	0			
18	Green watermilfoil	0	0	0	0	0	0	0	0			
19	Two-leaved watermilfoil	0	0	0	0	0	0	0	0			
20	Coontail	2	2	0	0	2	20	0	0	22	62	0.35
21	Elodea	0	0	0	0	0	0	0	0			
22	Bladderwort	0	0	0	0	0	0	0	0			
23	Mini Bladderwort	1	0	0	0	1	0	0	0	1	62	0.02
24	Buttercup	0	0	0	0	0	0	0	0			
25	Naiad	4	17	4	0	4	170	160	0	334	62	5.39
26	Brittle naiad	0	0	0	0	0	0	0	0			
27	Sago Pondweed	1	0	0	0	1	0	0	0	1	62	0.02
28	Slender spikerush	0	0	1	0	0	0	40	0	40	62	0.65
29	Cabomba	0	0	1	0	0	0	40	0	40	62	0.65
30	Water Lily	4	11	9	11	4	110	360	880	1354	62	21.84
31	Spatterdock	0	5	2	0	0	50	80	0	130	62	2.10
32	Water shield	0	0	0	1	0	0	0	80	80	62	1.29
33	Lemna minor	0	0	0	0	0	0	0	0			
34	Greater duckweed	0	0	0	0	0	0	0	0			
35	Watermeal	0	0	0	0	0	0	0	0			
36	Pickeral weed	0	9	0	0	0	90	0	0	90	62	1.45
37	Arrowhead	0	9	0	0	0	90	0	0	90	62	1.45
38	Arrow arum	0	0	0	0	0	0	0	0			
39	Cattail	1	5	0	2	1	50	0	160	211	62	3.40
40	Bulrush	5	17	5	7	5	170	200	560	935	62	15.08
41	Iris	0	0	0	0	0	0	0	0			
42	Swamp loosestrife	0	0	2	1	0	0	80	80	160	62	2.58
43	Purple loosestrife	1	5	0	0	1	50	0	0	51	62	0.82
44	Phrag	0	1	1	0	0	10	40	0	50	62	0.81
45												

**Total cumulative cover**

**138.94**

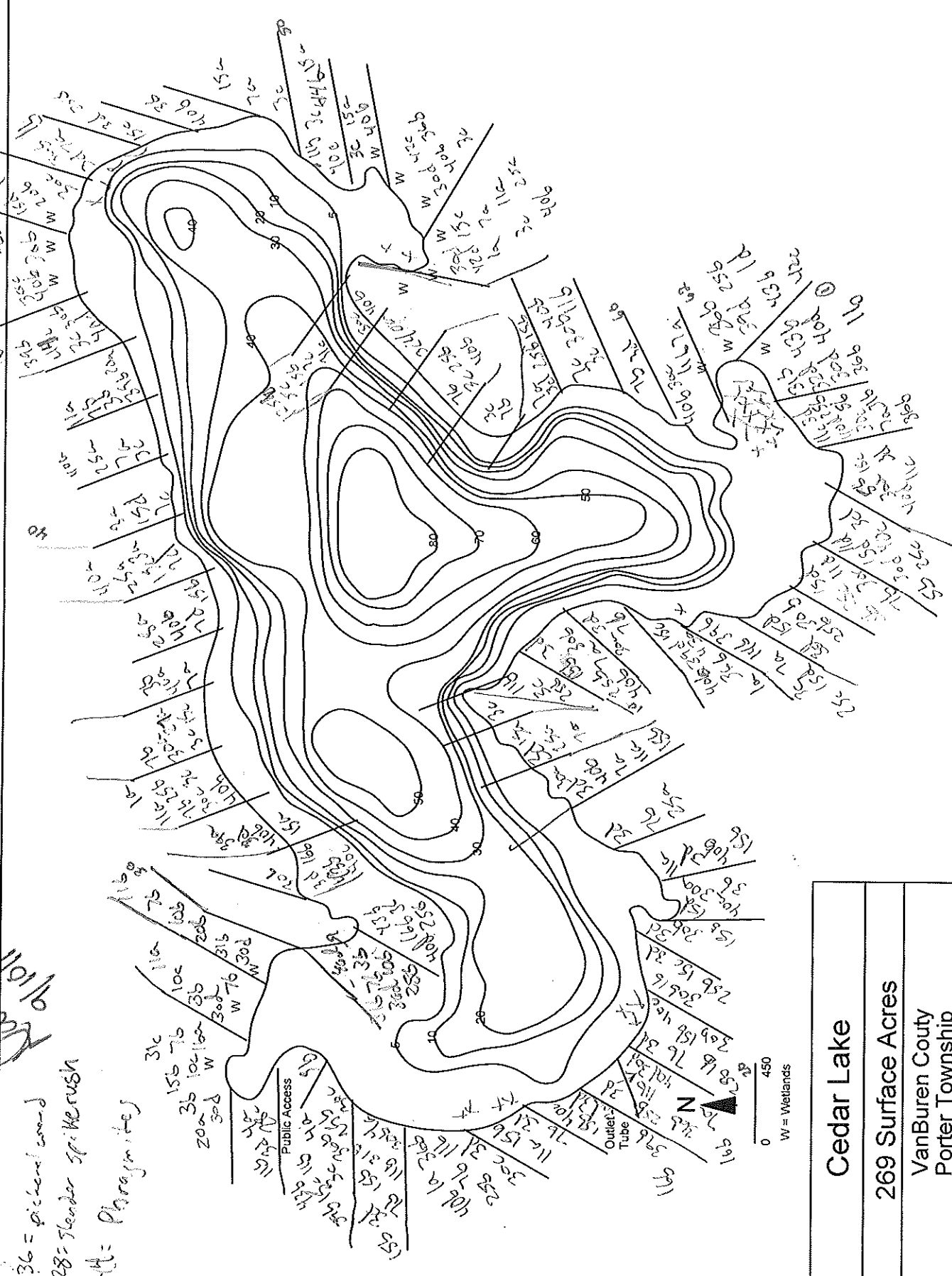
Porter  
9/10/13

- 36 = pickered weed
- 28 = slender spike-rush
- 44 = Phragmites

31c  
156 716  
35 loc 100  
30d W  
30d W 76  
30d W

Public Access

Outlet  
Tube



<b>Cedar Lake</b>
<b>269 Surface Acres</b>
VanBuren County Porter Township
<b>T4S, R13W, Sect 27, 28, 33</b>
Professional Lake Management, P.O. Box 132, Caledonia, MI 49316 Phone: (601) 382-4434